

7-31-2018

CONTRIBUTION OF FINANCIAL DEPTH AND FINANCIAL ACCESS TO POVERTY REDUCTION IN INDONESIA

Pinkan Mariskania Pasuhuk

Regional Development Planning Agency (Bappeda) Yogyakarta, Indonesia, mariskania@gmail.com

Follow this and additional works at: <https://bulletin.bmeb-bi.org/bmeb>

Recommended Citation

Pasuhuk, Pinkan Mariskania (2018) "CONTRIBUTION OF FINANCIAL DEPTH AND FINANCIAL ACCESS TO POVERTY REDUCTION IN INDONESIA," *Bulletin of Monetary Economics and Banking*: Vol. 21: No. 1, Article 7.

DOI: <https://doi.org/10.21098/bemp.v21i1.892>

Available at: <https://bulletin.bmeb-bi.org/bmeb/vol21/iss1/7>

This Article is brought to you for free and open access by Bulletin of Monetary Economics and Banking. It has been accepted for inclusion in Bulletin of Monetary Economics and Banking by an authorized editor of Bulletin of Monetary Economics and Banking. For more information, please contact bmebjournal@gmail.com.

CONTRIBUTION OF FINANCIAL DEPTH AND FINANCIAL ACCESS TO POVERTY REDUCTION IN INDONESIA

Pinkan Mariskania Pasuhuk¹

¹ Regional Development Planning Agency (Bappeda), Yogyakarta, Indonesia.

Email: mariskania@gmail.com

ABSTRACT

This research attempts to analyze possible relationships between financial depth and financial access indicators with poverty in Indonesia. Financial depth indicators include the ratio of savings to gross domestic regional product and the ratio of credit to gross domestic regional product. Financial access indicators include the number of banks and number of cooperatives, while poverty is measured by poverty headcount ratio. This research utilizes a panel provincial level data in Indonesia consisting of 33 provinces for the period of 2007 to 2015. The main findings of this research is that financial development variables show a statistically significant negative relationship with poverty, confirming the contribution of financial depth and financial access in reducing poverty in Indonesia. However, the savings variable shows contradictory results, suggesting that in regions where the savings rate is high, the poverty rate tends to be high also. A possible explanation is that consumption of private and household sector contributes significantly to Indonesia's GDP. Therefore, the effect of consumption is more effective in reducing poverty than the effect of savings.

Keywords : Saving; Credit; Banking; Cooperatives; Poverty.

JEL Classification: E21; E51; G21; G28.

Article history:

Received : March 10, 2018

Revised : June 1, 2018

Accepted : July 24, 2018

Available online : July 3, 2018

<https://doi.org/10.21098/bemp.v21i1.892>

I. INTRODUCTION

Indonesia has experienced a reduction in the poverty rate over the past 15 years. This has been achieved because of economic growth and multiple poverty alleviation programs, including social safety net program, conditional cash transfer program, expansion of credit to small and medium enterprises through KUR (*Kredit Usaha Rakyat*), and the community development program through PNPM (*Program Nasional Pemberdayaan Masyarakat*). The poverty headcount ratio has fallen to around half, from 19.14% in 2000 to 11.13% in 2015 (BPS, 2017). On the other hand, the financial sector in Indonesia is also growing to the objective of financial inclusion. The ownership of formal saving and credit account by adult population, for instance, shows an increasing trend. Financial sector development and financial inclusion have potentially become a new strategy for poverty alleviation.

In recent years, the focus of financial development issues has shifted to the provision of microfinance products for the middle-and-low-income population through the financial inclusion policy. The initiative for improving financial inclusion began in 2013 when the group of countries organized in the G20² committed to expanding access of formal financial services as one strategy for poverty alleviation by creating financial inclusion strategies in each country (Cull et al., 2014). The principle of financial inclusion is to ensure that everyone can receive financial services with the objective of increasing people's income, so that those who are still living in poverty can get out of this situation by taking advantage of the financial services they receive.

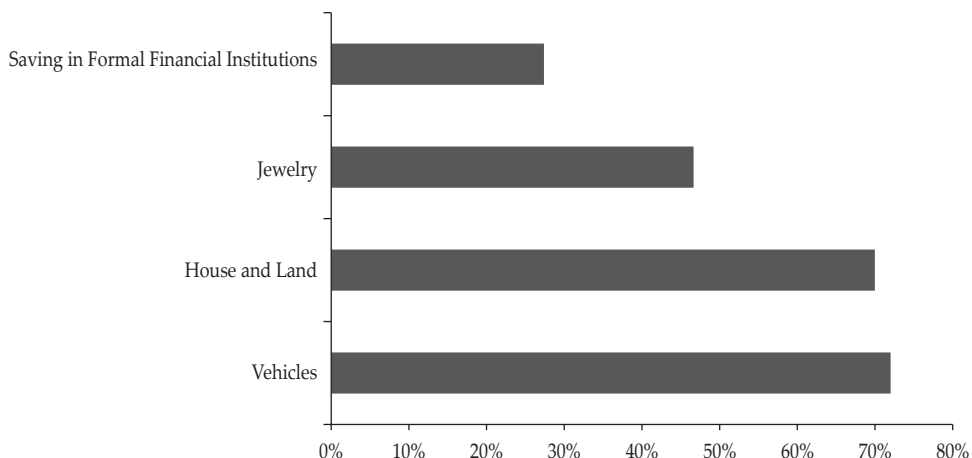
The concept of financial inclusion is also encouraged by the existing financial sector that often excludes low-and-middle-income populations from its services. For example, to open a savings account in formal financial institutions, such as banks, requires a minimum deposit that is in many instances difficult for poor people to have. In addition, to obtain credit from banks, the banks require collateral in the form of assets, and often poor people do not have sufficient assets that can be used as collateral. This problem is considered a supply-side issue because it is related to the financial institutions as providers of services. However, the problem is not always from the supply side, as it can also come from the demand side. The presence of informal sources of finance, such as borrowing from friends and relatives, and also saving money in the form of assets (such as house, lands, jewelry), is also a reason why middle-and-low-income populations often do not access formal financial services.

In a household survey conducted in 2014³, around 27% of the households surveyed had attempted to borrow money from sources other than families and

² The members of G20 countries are Argentina, Australia, Brazil, Canada, China, France, Germany, India, Indonesia, Italy, Japan, the Republic of Korea, Mexico, Russia, Saudi Arabia, South Africa, Turkey, the United Kingdom, the United States, and the European Union

³ The survey (Indonesia Family Life Survey or IFLS) was conducted in 13 provinces in Indonesia, which includes: North Sumatera, West Sumatera, South Sumatera, Lampung, DKI Jakarta, West Java, Central Java, DI Yogyakarta, East Java, Bali, West Nusa Tenggara, South Kalimantan, and South Sulawesi (Strauss et al., 2016)

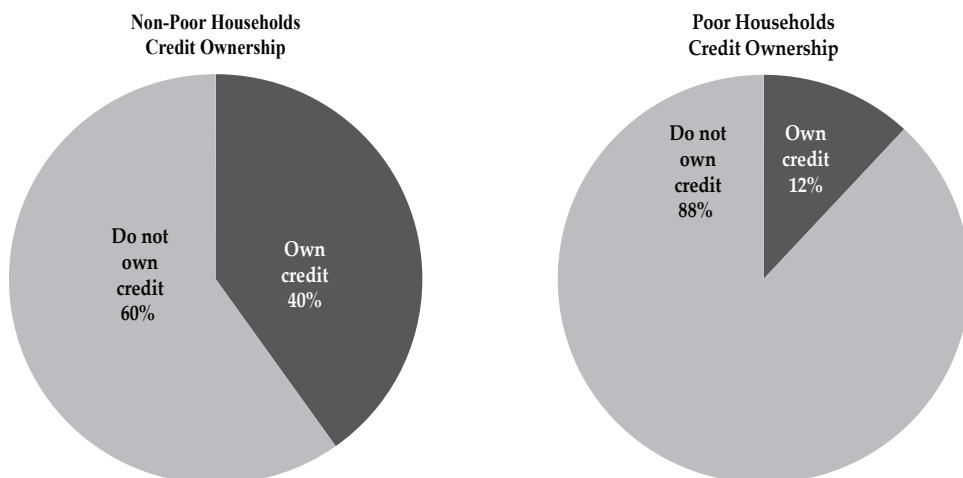
friends. This number is insignificant compared to around 73% who did not borrow from other sources. For savings accounts, only 28% of households have them in formal financial institutions. In addition, 69% saved in the form of house and land, 71% owned vehicles, and 46% saved in the form of jewelry. The asset ownership of households is described in the figure 1.

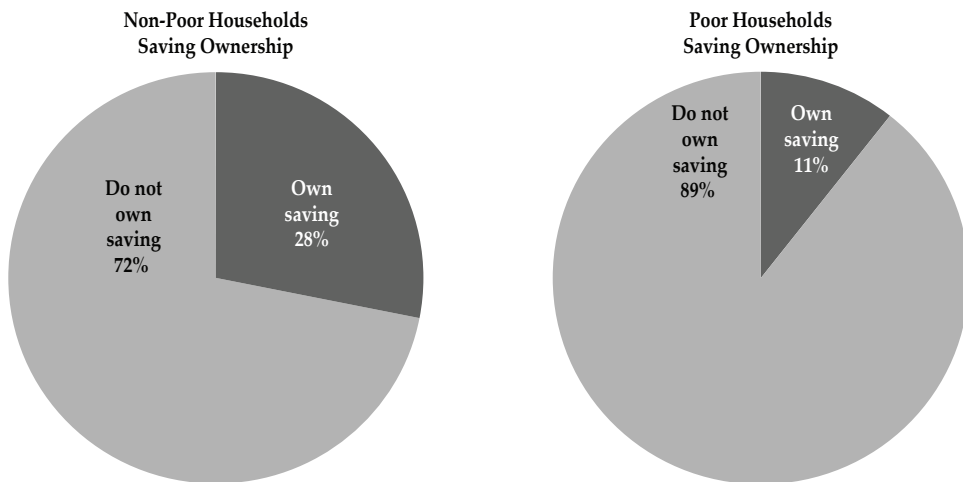


Source : author’s calculation, based on Strauss et al., “The Fifth Wave of The Indonesia Family Life Survey : Overview and Field Report”. March 2016

Figure 1. Assets Owned by Households

When households are identified based on poor and non-poor peoples, then the proportion of credit and savings account ownership can be observed in the figure 2.





Source : author's calculation, based on Strauss et al., "The Fifth Wave of The Indonesia Family Life Survey : Overview and Field Report". March 2016

Figure 2. Ownership of Credit and Saving Account on Poor and Non-Poor Households⁴

In the non-poor households, 40% of the households surveyed had credit at the time they were surveyed, and 60% of the households did not have any credit. In poor households, only 12% had credit while 88% did not have any credit from formal sources. For savings accounts, in non-poor households, 28% had savings, and 72% did not. By comparison, in poor households, 11% had savings accounts and 89% did not.

The figures illustrate how ownership of formal credit and savings accounts is very small in the group of poor households when compared to the non-poor households. As mentioned earlier, this condition might be caused by the supply side problem or demand side problem. However, the question to be addressed is whether or not the absence of formal credit and savings accounts in poor households is contributing to their poverty. Poor people are poor because either they do not access formal financial services or they do not access formal financial services because of their poor status.

Bhanerjee and Duflo (2011) argue that microcredit and saving access among poor people may help them escape poverty, although there are several problems with this. The impact of microcredit is very limited because its scope is usually small, and the activities are based on delivering small loans to poor people to build their businesses. However, the income effect of microcredit is incapable of lifting poor people out of their subsistence level. Although they are able to get out of the poverty trap, there is no further significant growth of their income (p.173). On the

⁴ The classification of poor and non-poor households is based on 2014 poverty line in Indonesia for urban area, which is Rp.326,853 per capita per month, issued by Central Statistical Agency (BPS)

other hand, the saving activities of the poor may also be problematic. Similar to people from other income groups, poor people also face an uncertain future that creates a risk of shocks which will require them to draw down their reserves of assets in the future. Therefore, the importance of saving for the poor people is as high as people from other income groups, and they are also as capable as other people to save.⁵ However, the saving behavior of people is highly affected by their expectation of their future life, and the more they have a positive expectation, the greater is their savings. Psychologically, it is easier to make the decision to save money for the higher income groups than for the poor, because they have a more positive perception of their future and face less constraints on their expenditure. Therefore, the saving behavior of the poor is less consistent than that of high income people, which makes their prospects for the future worsen (p.191).

Financial sector can affect poverty at either the micro or macro level. At the micro level, household access towards microfinance products, such as savings and credits will potentially increase household's income with several conditions, like consistent saving behavior and the usage of credit for business activities. In the macro level, the presence of financial institutions may encourage higher levels of saving in a country, which increases the money available for credit provision to business sectors in the economy, and it will increase investment in new businesses. Therefore, investments create employment opportunities, which contribute to poverty reduction.

II. THEORY

Many studies relate financial sector development with economic growth, while other studies relate it with poverty reduction. A study by Ahmed and Ansari (1998) on three South Asian countries (India, Pakistan, and Sri Lanka) finds that financial sector development, which is measured by the ratio of broad money over Gross Domestic Product (GDP) and the ratio of domestic credit over Gross Domestic Product (GDP), caused economic growth in these three countries. Another study by De Gregorio and Guidotti (1995) also find that financial development has a positive relationship with economic growth. De Gregorio and Guidotti (1995) used two different sets of data, which were a sample of 98 countries from 1960 to 1985, and another data set of 12 Latin American countries from 1950 to 1985. Results were mixed. The evidence from the first dataset showed a positive and significant relationship between credit to private sector and GDP, while in the second data set, the result was the opposite. De Gregorio and Guidotti (1995) argued that after the 1970s, many Latin American countries attempted to liberalize their financial markets. However, because proper government regulations were not in place, there was excessive lending by the private sector. It is argued that, as a result of a high proportion of credit to private sector, there was crisis.

A subsequent study by Arestis, Demetriades, and Luintel (2001) confirms the positive relationship between financial development and economic growth. They test the relationship in five developed countries (the United States, Japan, the

⁵ This condition applies for people who live in moderate poverty, not extreme poverty

United Kingdom, Germany, and France) using time-series data from 1968 to 1998 (ranging differently for each country). Their study included proxies from stock markets in addition to banks to measure financial development. The parameters used for stock market development were market capitalization and stock price volatility. The findings are mixed across countries, although in general, financial development is proven to have a positive relationship with economic growth. However, the evidence shows that banking sectors have a larger contribution than the stock market.

Jalilian and Kirkpatrick (2002) study how financial sector development contributes to lowering poverty for a panel of 42 developed and developing countries. Jalilian and Kirkpatrick (2002) argue that the effect of financial development on poverty is achieved through economic growth. Therefore, the first model examining the linkage between finance and growth can be written as:

$$g = \alpha_1 + \beta_1 X' + \gamma_1 Z' + \varepsilon_1$$

where g is the growth rate of GNP, α_1 is the intercept, X' is a vector of explanatory variables that include financial indicators⁶, Z' is a vector of other explanatory variables⁷, β_1 and γ_1 are parameters of the equation, and ε_1 is the error term.

To measure the effect on poverty, Jalilian and Kirkpatrick used two models. The first model is as follows:

$$\ln(\gamma_{ct}^p) = \gamma_1 \ln y_{ct} + \sum_{i=2}^m \gamma_i X_{ict} \quad i=1, \dots, m$$

where γ_{ct}^p is per capita income of the poorest quintile of the population in country c year t , y_{ct} is average per capita income of the overall population in country c year t , and X_{ict} is other factors of average income of the poor⁸ (variable i in country c year t), and γ_1 and γ_i are parameters of the estimate.

The second model is as follows:

$$g_{ct}^p = \gamma_1 g_{ct} + \sum_{i=2}^m \gamma_i \Delta X_{ict}$$

⁶ Variables used as proxy for financial indicators are Bank Deposit Money Assets (BDMA) over GDP and Net Foreign Assets (NFA) over GDP.

⁷ Other explanatory variables include education, trade openness, change in inflation rate, change in trade share, initial income per capita, change in manufacturing share, public spending, developing countries dummy, and interactive term (developing countries dummy multiplied by BDMA). The study suggested that developing countries benefited more from financial sector development than developed countries.

⁸ Explanatory variables used in the poverty regression are gini coefficient, inflation, public expenditure, initial income per capita, and developing countries dummy.

where g_{ct}^p is the growth of per capita income of the poor, g_{ct} is growth of per capita income of all population, ΔX_{ict} is the change of value for each variable, namely change in Gini, change in inflation, and change in public expenditure, and γ_1 and γ_i are parameters of the estimate.

The main findings of this study suggest that NFA has a higher effect on economic growth in the sample countries compared to BDMA as a financial development indicator. In addition, developing countries benefited more from financial development than developed countries in terms of economic growth. For the poverty regression analysis, growth of income of the poor is significantly affected by growth of overall population, the Gini index, and the inflation rate. However, Jalilian and Kirkpatrick did not test the direct linkage between financial sector development and poverty, because in their study, they argued that poverty reduction will be achieved through economic growth.

Another study by Honohan (2008) identifies the relationship between financial service access and poverty using cross-country data consisting of 162 countries, including both developed and developing countries. He captures the dimension of financial widening⁹ in addition to financial depth and tested its connection to poverty in those countries. The proxy for poverty is proportion of population living under \$1 per day, while independent variables included in the test are private credit to GDP ratio (as a proxy for financial depth), the inflation rate, institutions, GNI per capita of the bottom 90% of the population, and share of top-10% of the highest income in the population. Variables that were proven to have significant effects on poverty were private credit to GDP ratio, financial access, and the income distribution variables. Financial access and depth showed a negative sign, which is consistent with the main hypothesis that financial sector development lowers poverty. The GNI per capita of the bottom 90% of the population had a negative sign, while the share of the top-10% of the highest income in the population had a positive sign¹⁰.

Next, a study by Quartey (2005) investigates the relationship between financial sector development and poverty reduction in Ghana. This study takes the savings rate as the main indicator for financial development, along with domestic credit to GDP ratio, ratio of M2 to GDP, and per capita consumption as poverty measures¹¹. To test the relation, Quartey apply the Granger causality test and the Johansen Cointegration test to find if there is long-run cointegration between financial indicators and poverty reduction.

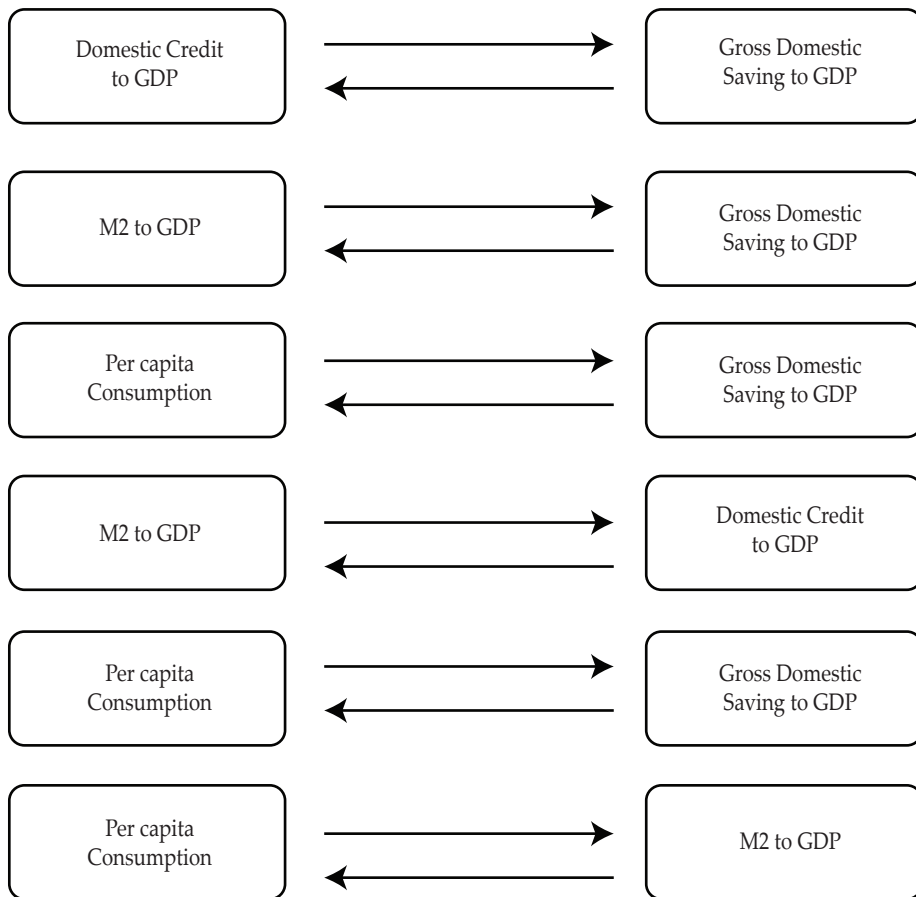
To test the existence of causality, the poverty variable was tested with each of the financial variables, financial variables were tested with each other, and

⁹ Honohan (2007) used percentage of adults who own saving or credit account in formal financial institutions.

¹⁰ However, when the access variable is included in the same regression test with the depth variable, the access is not proven to be significant. It is only significant when regressed separately with depth variable, showing that both dimensions may have correlation with each other, and needs to be put in different test.

¹¹ Quartey (2005) used time-series data taken from World Development Indicators for Ghana from 1970-2001

different direction of causation was applied in each of the tests, as shown in the figure below.



Source : Quartey (2005)

Figure 3. Direction of Causation between Variables

The result shows that there is a statistically significant causality between domestic credit over GDP to per capita consumption. Moreover, the Johansen cointegration test confirms a long-run cointegration between financial development variables and per capita consumption as a proxy for poverty.

To further check the relationship between financial indicators and poverty, Quartey also conducted a variance decomposition test¹² and a vector error correction

¹² Variance decomposition is done to explain the determinants of shocks in each variable, how much it is explained by the variable itself and by other variables.

model¹³. From the variance decomposition test, it was found that fluctuations of gross domestic saving and private credit to GDP are mostly explained by fluctuations of its own variable, and fluctuations of per capita consumption are mostly explained by gross domestic saving to GDP. The result of the vector error correction model showed that the value of R^2 is above 0.6 for each variable, which means that the value of the variable is also explained by the variable itself in the previous periods.

The main results were that an increase in credit to private sector has a positive effect on per capita consumption, the decrease in per capita consumption has a negative and significant effect in gross domestic saving to GDP, and an increase in credit to private sector leads to lower gross domestic saving to GDP ratio. In conclusion, this study also confirmed the contribution of financial sector development to poverty reduction. However, the effect of savings to poverty was insignificant. Quartey argues that financial intermediaries in Ghana are unable to channel the domestic resources from saving to pro-poor investments.

III. METHODOLOGY

3.1. Estimation Method and Variables

The method of estimation is a panel OLS (Ordinary Least Squares) with fixed and random effects estimator. The dependent variable is poverty headcount ratio (a proxy for poverty). Poverty headcount ratio is the proportion of population living below the poverty line. The independent variables to be included in the model consist of financial variables and control variables. The financial variables are: (1) ratio of savings to GDRP (Gross Domestic Regional Products), (2) ratio of private credit to GDRP (Gross Domestic Regional Products), (3) number of banks, and (4) number of cooperatives¹⁴. (1) and (2) proxy for financial depth while (3) and (4) proxy for financial access. The control variables are: average years of schooling, life expectancy rate, real income per capita, and the Gini index. The selection of control variables is motivated by the work of Balisacan et al. (2002).

3.2. Econometric Model

The econometric model is as follows.

$$\begin{aligned} \log(P)_{it} = & \alpha + \log(S)_{it} + \log(C)_{it} + \log(BO)_{it} + \log(Co)_{it} + \log(Sc)_{it} \\ & + \log(L)_{it} + \log(I)_{it} + \log(gini)_{it} + \varepsilon_{it} \end{aligned}$$

¹³ For the vector-error correction model, regression analysis is exercised by adding the lag-length to three years ($t-3$) to identify whether the value of each variable is also explained by the value of the variables in $t-1$, $t-2$, and $t-3$.

¹⁴ Cooperatives are included because it is a common source for financing for Indonesian population, and in the Indonesia Family Life Survey (IFLS) conducted in 2007, cooperatives had become the second most often accessed institution after banks in the search for loans

The model takes all variables in natural logarithmic form, where $(P)_{it}$ is poverty headcount ratio in province i year t , $(S)_{it}$ is saving to GDRP ratio in province i year t , $(C)_{it}$ is credit to GDRP ratio in province i year t , $(BO)_{it}$ is the number of bank office in province i year t , $(Co)_{it}$ is the number of cooperatives in province i year t , $(Sc)_{it}$ is average years of schooling in province i year t , $(L)_{it}$ is life expectancy rate in province i year t , $(I)_{it}$ is real per capita income in province i year t , $(gini)_{it}$ is gini index in province i year t , and ε_{it} is error term.

3.3. Data

The data used in this study is panel provincial-level data for Indonesia, and the main sources of the data are the Indonesian statistics issued by the Central Statistical Agency (BPS), Indonesian Banking Statistics issued by the Indonesian Central Bank, Bank Indonesia (BI), and the Financial Service Authority (OJK). For banking statistics, the data are obtained from three banking reports, namely, *Statistik Perbankan Indonesia*, *Statistik Bank Perkreditan Rakyat*, and *Statistik Perbankan Syariah*. Currently, Indonesia is divided into 34 provinces, but the youngest province, which is North Kalimantan, is officially separated from East Kalimantan and became an independent province in 2012, so it is impossible to obtain statistics before 2012. Therefore, this province is omitted from the analysis. The years included in the sample are 2007-2015 (nine years), which result in 297 observations (33 provinces, nine years).

IV. RESULT AND ANALYSIS

4.1. Cross Correlation Matrix

To identify the presence of multicollinearity, cross correlation matrix is presented in Table 1.

Table 1.
Cross Correlation Matrix¹⁵

	Log (Poverty)	Log (Saving)	Log (Credit)	Log (Bank Office)	Log (Cooperative)	Log (School)	Log (Life Expectancy)	Log (Income)	Log (Gini)
Log (Poverty)	1	-0.222587	-0.289494	-0.290098	-0.194003	-0.485487	-0.408460	-0.299767	0.060861
Log (Saving)	-0.222587	1	0.730726	0.215870	0.097828	0.360861	0.163437	-0.144010	0.016127
Log (Credit)	-0.289494	0.730726	1	0.228804	0.134679	0.347373	0.112569	0.126949	0.190073
Log (Bank Office)	-0.290098	0.215870	0.228804	1	0.892273	0.126187	0.528994	0.191226	0.213774
Log (Cooperative)	-0.194003	0.097828	0.134679	0.892273	1	0.121014	0.488863	0.128856	0.143347
Log (School)	-0.485487	0.360861	0.347373	0.126187	0.121014	1	0.467009	0.030730	-0.121753
Log (Life Expectancy)	-0.408460	0.163437	0.112569	0.528994	0.488863	0.467009	1	0.133227	0.059646
Log (Income)	-0.299767	-0.144010	0.126949	0.191226	0.128856	0.030730	0.133227	1	0.518457
Log (Gini)	0.060861	0.016127	0.190073	0.213774	0.143347	-0.121753	0.059646	0.518457	1

¹⁵ Multicollinearity exist between variables log(saving) and log(credit), variables log(bank_office) and log(cooperative), variables log(income) and log(gini).

4.2. Panel Fixed and Random Effect Methods

The fixed and random effect methods can be divided into the following: (1) two-way fixed effects (cross-section and period fixed effects), (2) two-way random effects (cross-section and period random), (3) one-way fixed effects (cross-section fixed and period random), and (4) one-way fixed effects (cross-section random and period fixed). Since there is a problem of multicollinearity, the variables with the high correlation are not included in the same regression¹⁶.

The two-way fixed effect regressions that includes variables without high correlation is presented in in Table 2.

Table 2.
Two-Way Fixed Effect Regression

Dependent Variable : Log(Poverty)			
Regression 1			
	Coefficient	t-statistic	Prob.
C	4.977085	4.598720	0.000007
LOG(SAVING)	0.036005	1.567476	0.118263
LOG(BANK_OFFICE)	-0.014754	-0.703713	0.482264
LOG(SCHOOL)	-0.095721	-0.488208	0.625828
LOG(LIFE_EXP)	-0.625869	-2.469626	0.014191
LOG(INCOME)	0.056350	1.177685	0.240038
R^2			0.988989
Regression 2			
	Coefficient	t-statistic	Prob.
C	4.685784	4.460348	0.000012
LOG(CREDIT)	0.036318	1.652293	0.099725
LOG(BANK_OFFICE)	-0.010597	-0.515525	0.606640
LOG(SCHOOL)	-0.061393	-0.310660	0.756317
LOG(LIFE_EXP)	-0.611565	-2.424822	0.016022
LOG(INCOME)	0.074292	1.602176	0.110374
R^2			0.989000
Regression 3			
	Coefficient	t-statistic	Prob.
C	5.380353	4.855324	0.000002
LOG(SAVING)	0.034141	1.525457	0.128404
LOG(COOPERATIVE)	-0.052683	-1.641962	0.101850
LOG(SCHOOL)	-0.074082	-0.378437	0.705426
LOG(LIFE_EXP)	-0.653031	-2.587680	0.010225
LOG(INCOME)	0.057269	1.202986	0.230115
R^2			0.989084

¹⁶ Log(saving) is not regressed together with log(credit), log(bank_office) is not regressed together with log(cooperative), and log(income) is not regressed together with log(gini).

Table 2.
Two-Way Fixed Effect Regression (Continued)

Regression 4			
	Coefficient	t-statistic	Prob.
C	5.365112	4.828170	0.000002
LOG(SAVING)	0.037780	1.726048	0.085569
LOG(COOPERATIVE)	-0.046627	-1.429684	0.154051
LOG(SCHOOL)	0.011000	0.059175	0.952860
LOG(LIFE_EXP)	-0.570515	-2.273282	0.023855
LOG(GINI)	0.076208	1.084444	0.279209
<i>R</i> ²			0.989072
Regression 5			
	Coefficient	t-statistic	Prob.
C	4.688512	4.458971	0.000012
LOG(CREDIT)	0.035046	1.591486	0.112759
LOG(BANK_OFFICE)	-0.009621	-0.467610	0.640469
LOG(SCHOOL)	0.054051	0.288192	0.773438
LOG(LIFE_EXP)	-0.500178	-2.013003	0.045182
LOG(GINI)	0.101385	1.467360	0.143530
<i>R</i> ²			0.988982
Regression 6			
	Coefficient	t-statistic	Prob.
C	5.055290	4.643275	0.000006
LOG(CREDIT)	0.033965	1.552072	0.121905
LOG(COOPERATIVE)	-0.042702	-1.310351	0.191275
LOG(SCHOOL)	0.069096	0.368801	0.712587
LOG(LIFE_EXP)	-0.529966	-2.132108	0.033969
LOG(GINI)	0.086399	1.236154	0.217557
<i>R</i> ²			0.989048
Regression 7			
	Coefficient	t-statistic	Prob.
C	5.009077	4.644228	0.000006
LOG(SAVING)	0.039120	1.745471	0.082127
LOG(BANK_OFFICE)	-0.014629	-0.698225	0.485683
LOG(SCHOOL)	-0.006096	-0.032779	0.973877
LOG(LIFE_EXP)	-0.543752	-2.163195	0.031470
LOG(GINI)	0.092061	1.325809	0.186108
<i>R</i> ²			0.989005
Regression 8			
	Coefficient	t-statistic	Prob.
C	5.109032	4.718205	0.000004
LOG(CREDIT)	0.034867	1.598034	0.111293
LOG(COOPERATIVE)	-0.049837	-1.555107	0.121181
LOG(SCHOOL)	-0.041240	-0.209097	0.834542
LOG(LIFE_EXP)	-0.641709	-2.551704	0.011313
LOG(INCOME)	0.074378	1.610989	0.108439
<i>R</i> ²			0.989094

Note : The probability values in italic are significant

The two-way random effect regression that includes variables without high correlation is presented in Table 3.

Table 3.
Two-Way Random Effect Regression

Dependent Variable : Log(Poverty)			
Regression 1			
	Coefficient	t-statistic	Prob.
C	9.610679	7.564166	0.000000
LOG(SAVING)	0.127202	5.032007	0.000001
LOG(BANK_OFFICE)	-0.110075	-4.772397	0.000003
LOG(SCHOOL)	-0.949556	-5.002319	0.000001
LOG(LIFE_EXP)	-0.919633	-2.912164	0.003867
LOG(INCOME)	-0.074389	-13.918370	0.000000
R^2			0.735138
Regression 2			
	Coefficient	t-statistic	Prob.
C	8.770860	6.624221	0.000000
LOG(CREDIT)	-0.009848	-0.373332	0.709173
LOG(BANK_OFFICE)	-0.100382	-4.145217	0.000045
LOG(SCHOOL)	-1.031981	-5.227768	0.000000
LOG(LIFE_EXP)	-0.714689	-2.179485	0.030097
LOG(INCOME)	-0.084949	-16.575498	0.000000
R^2			0.735076
Regression 3			
	Coefficient	t-statistic	Prob.
C	10.403175	8.084162	0.000000
LOG(SAVING)	0.110712	4.381711	0.000016
LOG(COOPERATIVE)	-0.169039	-4.764634	0.000003
LOG(SCHOOL)	-0.939678	-4.934352	0.000001
LOG(LIFE_EXP)	-0.919160	-2.910355	0.003889
LOG(INCOME)	-0.077964	-15.821789	0.000000
R^2			0.735076
Regression 4			
	Coefficient	t-statistic	Prob.
C	13.058086	8.649498	0.000000
LOG(SAVING)	0.182551	6.260395	0.000000
LOG(COOPERATIVE)	-0.343446	-8.962765	0.000000
LOG(SCHOOL)	-0.404582	-1.837256	0.067192
LOG(LIFE_EXP)	-1.787595	-4.863569	0.000002
LOG(GINI)	-0.713338	-9.430031	0.000000
R^2			0.622528

Table 3.
Two-Way Random Effect Regression (Continued)

Regression 5			
	Coefficient	t-statistic	Prob.
C	10.231259	6.266449	0.000000
LOG(CREDIT)	-0.029556	-0.906720	0.365305
LOG(BANK_OFFICE)	-0.236332	-8.831215	0.000000
LOG(SCHOOL)	-0.455893	-1.919027	0.055959
LOG(LIFE_EXP)	-1.543060	-3.865877	0.000137
LOG(GINI)	-0.742559	-8.841269	0.000000
<i>R</i> ²			0.558994
Regression 6			
	Coefficient	t-statistic	Prob.
C	12.096062	7.494855	0.000000
LOG(CREDIT)	-0.050037	-1.582810	0.114551
LOG(COOPERATIVE)	-0.384650	-9.602006	0.000000
LOG(SCHOOL)	-0.395216	-1.690283	0.092045
LOG(LIFE_EXP)	-1.589457	-4.060663	0.000063
LOG(GINI)	-0.819104	-10.489369	0.000000
<i>R</i> ²			0.575346
Regression 7			
	Coefficient	t-statistic	Prob.
C	11.384481	7.634336	0.000000
LOG(SAVING)	0.212429	7.473380	0.000000
LOG(BANK_OFFICE)	-0.225422	-9.314997	0.000000
LOG(SCHOOL)	-0.434729	-1.998972	0.046541
LOG(LIFE_EXP)	-1.723831	-4.725298	0.000004
LOG(GINI)	-0.591146	-7.417032	0.000000
<i>R</i> ²			0.628961
Regression 8			
	Coefficient	t-statistic	Prob.
C	9.676935	7.277058	0.000000
LOG(CREDIT)	-0.018617	-0.719196	0.472597
LOG(COOPERATIVE)	-0.177655	-4.857814	0.000002
LOG(SCHOOL)	-0.980652	-4.995624	0.000001
LOG(LIFE_EXP)	-0.739217	-2.276556	0.023539
LOG(INCOME)	-0.085061	-17.694716	0.000000
<i>R</i> ²			0.718098

Note : The probability values in italic are significant

The one-way fixed effect (cross-section fixed and period random) regression that includes variables without high correlation is presented in Table 4.

Table 4.
One-Way Fixed Effect (Cross-Section Fixed and Period Random) Regression

Dependent Variable : Log(Poverty)			
Regression 1			
	Coefficient	t-statistic	Prob.
C	9.520410	9.568910	0.000000
LOG(SAVING)	0.134768	6.783015	0.000000
LOG(BANK_OFFICE)	-0.115162	-6.069908	0.000000
LOG(SCHOOL)	-0.845155	-5.500256	0.000000
LOG(LIFE_EXP)	-0.944014	-3.809903	0.000174
LOG(INCOME)	-0.072772	-17.057107	0.000000
R^2			0.981426
Regression 2			
	Coefficient	t-statistic	Prob.
C	8.665006	8.706914	0.000000
LOG(CREDIT)	-0.005893	-0.296277	0.767256
LOG(BANK_OFFICE)	-0.105028	-5.491695	0.000000
LOG(SCHOOL)	-0.952185	-6.214721	0.000000
LOG(LIFE_EXP)	-0.723295	-2.929897	0.003693
LOG(INCOME)	-0.084169	-21.447106	0.000000
R^2			0.979417
Regression 3			
	Coefficient	t-statistic	Prob.
C	10.478623	10.338178	0.000000
LOG(SAVING)	0.117112	5.895313	0.000000
LOG(COOPERATIVE)	-0.192756	-6.413367	0.000000
LOG(SCHOOL)	-0.811487	-5.251930	0.000000
LOG(LIFE_EXP)	-0.958360	-3.866301	0.000140
LOG(INCOME)	-0.075347	-19.096414	0.000000
R^2			0.981614
Regression 4			
	Coefficient	t-statistic	Prob.
C	13.254958	13.360115	0.000000
LOG(SAVING)	0.181874	9.447340	0.000000
LOG(COOPERATIVE)	-0.385526	-14.457298	0.000000
LOG(SCHOOL)	-0.230617	-1.552979	0.121649
LOG(LIFE_EXP)	-1.834412	-7.618726	0.000000
LOG(GINI)	-0.686889	-13.809927	0.000000
R^2			0.974002

Table 4.
One-Way Fixed Effect (Cross-Section Fixed and Period Random) Regression
(Continued)

Regression 5			
	Coefficient	t-statistic	Prob.
C	10.261927	10.363291	0.000000
LOG(CREDIT)	-0.022684	-1.141935	0.254536
LOG(BANK_OFFICE)	-0.251798	-14.987216	0.000000
LOG(SCHOOL)	-0.328502	-2.216230	0.027545
LOG(LIFE_EXP)	-1.588740	-6.563624	0.000000
LOG(GINI)	-0.727125	-14.212227	0.000000
<i>R</i> ²			0.968128
Regression 6			
	Coefficient	t-statistic	Prob.
C	12.448324	12.434492	0.000000
LOG(CREDIT)	-0.041881	-2.133894	0.033791
LOG(COOPERATIVE)	-0.433933	-16.557746	0.000000
LOG(SCHOOL)	-0.233633	-1.569729	0.117699
LOG(LIFE_EXP)	-1.650401	-6.820996	0.000000
LOG(GINI)	-0.791808	-16.344309	0.000000
<i>R</i> ²			0.9702955
Regression 7			
	Coefficient	t-statistic	Prob.
C	11.344108	11.513858	0.000000
LOG(SAVING)	0.216559	11.473524	0.000000
LOG(BANK_OFFICE)	-0.237159	-14.321669	0.000000
LOG(SCHOOL)	-0.288602	-1.953235	0.051868
LOG(LIFE_EXP)	-1.766423	-7.329417	0.000000
LOG(GINI)	-0.573187	-10.833752	0.000000
<i>R</i> ²			0.9738310
Regression 8			
	Coefficient	t-statistic	Prob.
C	9.781779	9.624794	0.000000
LOG(CREDIT)	-0.014196	-0.720128	0.472096
LOG(COOPERATIVE)	-0.203958	-6.792025	0.000000
LOG(SCHOOL)	-0.867819	-5.620982	0.000000
LOG(LIFE_EXP)	-0.772637	-3.125916	0.001974
LOG(INCOME)	-0.082934	-22.171107	0.000000
<i>R</i> ²			0.980116

Note : The probability values in italic are significant

The one-way fixed effect (cross-section random and period fixed) regression that includes variables without high correlation is presented in Table 5.

Table 5.
One-Way Fixed Effect (Cross-Section Random and Period Fixed) Regression

Dependent Variable : Log(Poverty)			
Regression 1			
	Coefficient	t-statistic	Prob.
C	5.654333	5.335876	0.000000
LOG(SAVING)	0.032922	1.454623	0.146882
LOG(BANK_OFFICE)	-0.026251	-1.342705	0.180443
LOG(SCHOOL)	-0.313499	-1.693819	0.091400
LOG(LIFE_EXP)	-0.666495	-2.660473	0.008248
LOG(INCOME)	0.055152	1.161403	0.246457
R^2			0.824035
Regression 2			
	Coefficient	t-statistic	Prob.
C	5.377045	5.215721	0.000000
LOG(CREDIT)	0.025498	1.178961	0.239404
LOG(BANK_OFFICE)	-0.022467	-1.168830	0.243456
LOG(SCHOOL)	-0.293972	-1.579563	0.115324
LOG(LIFE_EXP)	-0.647975	-2.595621	0.009935
LOG(INCOME)	0.071647	1.553929	0.121319
R^2			0.823636
Regression 3			
	Coefficient	t-statistic	Prob.
C	5.956207	5.509603	0.000000
LOG(SAVING)	0.028473	1.283321	0.200430
LOG(COOPERATIVE)	-0.056719	-1.944375	0.052841
LOG(SCHOOL)	-0.293500	-1.581618	0.114854
LOG(LIFE_EXP)	-0.676397	-2.701056	0.007329
LOG(INCOME)	0.056828	1.197185	0.232236
R^2			0.825123
Regression 4			
	Coefficient	t-statistic	Prob.
C	5.960622	5.515136	0.000000
LOG(SAVING)	0.031681	1.459532	0.145528
LOG(COOPERATIVE)	-0.051499	-1.745381	0.082004
LOG(SCHOOL)	-0.213492	-1.208204	0.227977
LOG(LIFE_EXP)	-0.593848	-2.390804	0.017465
LOG(GINI)	0.083050	1.189141	0.235381
R^2			0.825112

Table 5.
One-Way Fixed Effect (Cross-Section Random and Period Fixed) Regression
(Continued)

Regression 5			
	Coefficient	t-statistic	Prob.
C	5.391544	5.231849	0.000000
LOG(CREDIT)	0.023875	1.102592	0.271141
LOG(BANK_OFFICE)	-0.021628	-1.125396	0.261375
LOG(SCHOOL)	-0.188413	-1.065479	0.287567
LOG(LIFE_EXP)	-0.538041	-2.191398	0.029238
LOG(GINI)	0.108205	1.575574	0.116241
<i>R</i> ²			0.823673
Regression 6			
	Coefficient	t-statistic	Prob.
C	5.699219	5.384193	0.000000
LOG(CREDIT)	0.021745	1.007967	0.314331
LOG(COOPERATIVE)	-0.049020	-1.664050	0.097209
LOG(SCHOOL)	-0.175379	-0.989987	0.323026
LOG(LIFE_EXP)	-0.555098	-2.257334	0.024750
LOG(GINI)	0.092093	1.326932	0.185601
<i>R</i> ²			0.824499
Regression 7			
	Coefficient	t-statistic	Prob.
C	5.691065	5.389392	0.000000
LOG(SAVING)	0.035505	1.604588	0.109700
LOG(BANK_OFFICE)	-0.026146	-1.337373	0.182175
LOG(SCHOOL)	-0.230194	-1.305979	0.192620
LOG(LIFE_EXP)	-0.583247	-2.348871	0.019518
LOG(GINI)	0.098886	1.431645	0.153349
<i>R</i> ²			0.824420
Regression 8			
	Coefficient	t-statistic	Prob.
C	5.726299	5.418324	0.000000
LOG(CREDIT)	0.023011	1.067825	0.286509
LOG(COOPERATIVE)	-0.055025	-1.887649	0.060096
LOG(SCHOOL)	-0.275502	-1.477038	0.140777
LOG(LIFE_EXP)	-0.662704	-2.653526	0.008416
LOG(INCOME)	0.071230	1.545159	0.123425
<i>R</i> ²			0.824844

Note : The probability values in italic are significant

The regression results of the fixed and random effects can be summarized as follows:

(1) Two-way fixed effects regression

In the two-way fixed effects regression, none of the financial development variables are statistically significant. The only variable that shows significance is log(life_exp).

(2) Two-way random effects regression

In the two-way random effects regression, log(saving) is statistically significant and positive, log(credit) is negative but statistically insignificant, log(bank_office) and log(cooperative) are statistically significant and negative, and all control variables are statistically significant and negative.

(3) One-way fixed effects (cross-section fixed and period random) regression

In the cross-section fixed and period random effects regression, log(saving) is statistically significant and positive, log(credit) is statistically significant and negative, but did so only in 1 of the 4 tests, log(bank_office) and log(cooperative) are negative and statistically significant, and other control variables are negative and statistically significant as well.

(4) One-way fixed effects (period fixed and cross-section random) regression

In the period fixed and cross-section random effects regression, none of the financial development variables are proven to be statistically significant, and the only statistically significant variable is log(life_exp).

The Hausman test is run to further check the more appropriate method. And the result of the Hausman test is presented in Table 6.

Table 6.
Hausman Test Result

Test Summary	Chi-Sq. Statistic	Chi-Sq. d.f.	Prob.
Cross-section Random	44.2782	8	0.00000
Period Random	123.3007	8	0.00000

The result of the Hausman test is statistically significant for both cross-section random period fixed effects and cross-section fixed period random effects, so both methods are relatively better than others.

The financial sector development is mostly associated with the policies made by the central government, such as the policy of interest rate that will affect the saving and credit provision, and the regulation for banking sector or cooperatives that will affect the presence of banks and cooperatives in a certain province. So, the unique characteristics of each province, such as the policy made by its regional government, are unlikely to affect our estimation. Therefore, the cross-section fixed and period random effects estimation method is more appropriate than the cross-section random and period fixed effects approach.

4.3. Robustness Check

From the cross-section fixed and period random effects regression result shown in Table 4, the variable log(saving) shows a positive and statistically significant

relation, $\log(\text{credit})$ is negative and statistically significant, $\log(\text{bank_office})$ and $\log(\text{cooperative})$ are negative and statistically significant, and all the control variables included in the model, namely $\log(\text{school})$, $\log(\text{life_exp})$, $\log(\text{income})$ and $\log(\text{Gini})$, are negative and statistically significant. All the results are as expected, except for $\log(\text{saving})$ which shows contradictory result. The positive sign reflects that a higher savings rate leads to a higher poverty rate. This result is consistent in almost all the regression tests regardless of methods used.

To further check the robustness of the result, the following two regressions are estimated:

(1) Regression by Omitting Outlier

Jakarta is considered an outlier because of extreme values. Therefore, Jakarta is omitted from the regression model. The result is presented in Table 7.

Table 7.
Regression by Omitting Outlier

Dependent Variable : Log(Poverty)			
Regression 1			
	Coefficient	t-statistic	Prob.
C	14.954385	7.066222	0.000000
LOG(SAVING)	0.106183	2.380114	0.018748
LOG(BANK_OFFICE)	0.000206	0.006339	0.994952
LOG(SCHOOL)	-1.818947	-5.562298	0.000000
LOG(LIFE_EXP)	-1.895785	-3.868936	0.000172
LOG(INCOME)	-0.075986	-11.916260	0.000000
R^2			0.977725
Regression 2			
	Coefficient	t-statistic	Prob.
C	14.721846	6.952053	0.000000
LOG(CREDIT)	-0.060521	-1.710022	0.089629
LOG(BANK_OFFICE)	0.025478	0.791244	0.430232
LOG(SCHOOL)	-2.024970	-6.382255	0.000000
LOG(LIFE_EXP)	-1.811592	-3.705012	0.000311
LOG(INCOME)	-0.082175	-14.551405	0.000000
R^2			0.977395
Regression 3			
	Coefficient	t-statistic	Prob.
C	15.336275	7.753837	0.000000
LOG(SAVING)	0.099551	2.280420	0.024198
LOG(COOPERATIVE)	-0.236482	-4.488827	0.000016
LOG(SCHOOL)	-1.401275	-4.571069	0.000011
LOG(LIFE_EXP)	-1.768333	-3.762766	0.000252
LOG(INCOME)	-0.059518	-9.696596	0.000000
R^2			0.980152

Table 7.
Regression by Omitting Outlier (Continued)

Regression 4			
	Coefficient	t-statistic	Prob.
C	17.158440	8.605638	0.000000
LOG(SAVING)	0.185602	4.399982	0.000022
LOG(COOPERATIVE)	-0.419191	-8.927071	0.000000
LOG(SCHOOL)	-0.682454	-2.297026	0.023204
LOG(LIFE_EXP)	-2.410108	-5.209248	0.000001
LOG(GINI)	-0.489806	-5.974366	0.000000
R^2			0.973126
Regression 5			
	Coefficient	t-statistic	Prob.
C	12.139505	5.689331	0.000000
LOG(CREDIT)	-0.072617	-2.047958	0.042562
LOG(BANK_OFFICE)	-0.138149	-4.847215	0.000003
LOG(SCHOOL)	-0.885103	-2.891031	0.004497
LOG(LIFE_EXP)	-1.911685	-3.907617	0.000149
LOG(GINI)	-0.754846	-9.649279	0.000000
R^2			0.963105
Regression 6			
	Coefficient	t-statistic	Prob.
C	16.323851	8.160409	0.000000
LOG(CREDIT)	-0.030858	-0.865387	0.388409
LOG(COOPERATIVE)	-0.445905	-9.385027	0.000000
LOG(SCHOOL)	-0.790793	-2.667496	0.008606
LOG(LIFE_EXP)	-2.193730	-4.756284	0.000005
LOG(GINI)	-0.566956	-7.077966	0.000000
R^2			0.967220
Regression 7			
	Coefficient	t-statistic	Prob.
C	13.023177	6.094741	0.000000
LOG(SAVING)	0.257894	6.207509	0.000000
LOG(BANK_OFFICE)	-0.154926	-5.553148	0.000000
LOG(SCHOOL)	-0.631744	-2.053154	0.042048
LOG(LIFE_EXP)	-2.085426	-4.256430	0.000039
LOG(GINI)	-0.608694	-7.413549	0.000000
R^2			0.967241
Regression 8			
	Coefficient	t-statistic	Prob.
C	14.718147	7.425882	0.000000
LOG(CREDIT)	-0.025452	-0.714981	0.475893
LOG(COOPERATIVE)	-0.233022	-4.339037	0.000028
LOG(SCHOOL)	-1.512686	-4.992515	0.000002
LOG(LIFE_EXP)	-1.604337	-3.441185	0.000778
LOG(INCOME)	-0.063991	-11.061210	0.000000
R^2			0.979587

Note : The probability values in italic are significant

(2) Regression by Dividing Western and Eastern Parts

The western part of Indonesia includes the following provinces: Aceh, North Sumatera, West Sumatera, Riau, Jambi, South Sumatera, Bengkulu, Lampung, Bangka-Belitung, Riau islands, West Java, Central Java, Yogyakarta, East Java, Banten, and Bali. The eastern part of Indonesia include the following provinces: West Nusa Tenggara, East Nusa Tenggara, West Kalimantan, Central Kalimantan, South Kalimantan, East Kalimantan, North Sulawesi, Central Sulawesi, South Sulawesi, Southeast Sulawesi, Gorontalo, West Sulawesi, Maluku, North Maluku, West Papua, and Papua.

The result of western part regression is presented in Table 8.

Table 8.
Western Part Regression Result

Dependent Variable : Log(Poverty)			
Regression 1			
	Coefficient	t-statistic	Prob.
C	14.469917	7.280917	0.000000
LOG(SAVING)	0.107672	2.636794	0.009449
LOG(BANK_OFFICE)	0.001479	0.050140	0.960092
LOG(SCHOOL)	-1.765838	-5.839293	0.000000
LOG(LIFE_EXP)	-1.795871	-3.944739	0.000133
LOG(INCOME)	-0.078277	-13.035774	0.000000
R^2			0.972449
Regression 2			
	Coefficient	t-statistic	Prob.
C	14.127201	7.112559	0.000000
LOG(CREDIT)	-0.059783	-1.854594	0.066049
LOG(BANK_OFFICE)	0.026580	0.907628	0.365849
LOG(SCHOOL)	-1.962855	-6.651161	0.000000
LOG(LIFE_EXP)	-1.693550	-3.733492	0.000287
LOG(INCOME)	-0.084791	-15.993063	0.000000
R^2			0.971984
Regression 3			
	Coefficient	t-statistic	Prob.
C	14.943711	8.020135	0.000000
LOG(SAVING)	0.102639	2.567591	0.011438
LOG(COOPERATIVE)	-0.243885	-5.064545	0.000001
LOG(SCHOOL)	-1.344689	-4.754887	0.000005
LOG(LIFE_EXP)	-1.676596	-3.839734	0.000196
LOG(INCOME)	-0.060944	-10.408710	0.000000
R^2			0.975845

Table 8.
Western Part Regression Result (Continued)

Regression 4			
	Coefficient	t-statistic	Prob.
C	17.041731	9.066108	0.000000
LOG(SAVING)	0.190377	4.954935	0.000002
LOG(COOPERATIVE)	-0.418245	-9.753296	0.000000
LOG(SCHOOL)	-0.697785	-2.503005	0.013626
LOG(LIFE_EXP)	-2.374063	-5.544440	0.000000
LOG(GINI)	-0.531837	-6.719357	0.000000
<i>R</i> ²			0.967478
Regression 5			
	Coefficient	t-statistic	Prob.
C	11.965478	5.927207	0.000000
LOG(CREDIT)	-0.068806	-2.127501	0.035375
LOG(BANK_OFFICE)	-0.131663	-5.042745	0.000002
LOG(SCHOOL)	-0.887936	-3.067267	0.002657
LOG(LIFE_EXP)	-1.885710	-4.151199	0.000061
LOG(GINI)	-0.814346	-10.780522	0.000000
<i>R</i> ²			0.953507
Regression 6			
	Coefficient	t-statistic	Prob.
C	16.073405	8.545934	0.000000
LOG(CREDIT)	-0.026303	-0.809502	0.419790
LOG(COOPERATIVE)	-0.448195	-10.346999	0.000000
LOG(SCHOOL)	-0.788979	-2.832397	0.005400
LOG(LIFE_EXP)	-2.135438	-5.009793	0.000002
LOG(GINI)	-0.616612	-7.963689	0.000000
<i>R</i> ²			0.964314
Regression 7			
	Coefficient	t-statistic	Prob.
C	13.029276	6.437264	0.000000
LOG(SAVING)	0.261701	6.920644	0.000000
LOG(BANK_OFFICE)	-0.146755	-5.741832	0.000000
LOG(SCHOOL)	-0.652820	-2.249427	0.026264
LOG(LIFE_EXP)	-2.085444	-4.581316	0.000011
LOG(GINI)	-0.661771	-8.380267	0.000000
<i>R</i> ²			0.959248
Regression 8			
	Coefficient	t-statistic	Prob.
C	14.187699	7.629145	0.000000
LOG(CREDIT)	-0.024123	-0.744633	0.457914
LOG(COOPERATIVE)	-0.240126	-4.893466	0.000003
LOG(SCHOOL)	-1.446596	-5.160256	0.000001
LOG(LIFE_EXP)	-1.487872	-3.445312	0.000781
LOG(INCOME)	-0.065973	-12.019562	0.000000
<i>R</i> ²			0.975045

Note : The probability values in italic are significant

The result of western part regression is presented in Table 5.

Table 9.
Eastern Part Regression Result

Dependent Variable : Log(Poverty)			
Regression 1			
	Coefficient	t-statistic	Prob.
C	9.823059	8.795537	0.000000
LOG(SAVING)	0.115003	5.488121	0.000000
LOG(BANK_OFFICE)	-0.178919	-7.166147	0.000000
LOG(SCHOOL)	-0.697720	-4.108824	0.000072
LOG(LIFE_EXP)	-1.019249	-3.600154	0.000460
LOG(INCOME)	-0.076812	-13.092495	0.000000
R ²			0.985229
Regression 2			
	Coefficient	t-statistic	Prob.
C	9.376369	8.331527	0.000000
LOG(CREDIT)	0.021863	0.970046	0.333927
LOG(BANK_OFFICE)	-0.177573	-7.046816	0.000000
LOG(SCHOOL)	-0.774611	-4.561788	0.000012
LOG(LIFE_EXP)	-0.882750	-3.108375	0.002337
LOG(INCOME)	-0.089785	-16.691777	0.000000
R ²			0.983202
Regression 3			
	Coefficient	t-statistic	Prob.
C	8.905722	8.001620	0.000000
LOG(SAVING)	0.101424	4.823560	0.000004
LOG(COOPERATIVE)	-0.153501	-4.438369	0.000020
LOG(SCHOOL)	-0.802658	-4.679065	0.000007
LOG(LIFE_EXP)	-0.625496	-2.278306	0.024434
LOG(INCOME)	-0.092300	-17.805677	0.000000
R ²			0.983030
Regression 4			
	Coefficient	t-statistic	Prob.
C	12.335323	11.301537	0.000000
LOG(SAVING)	0.173007	8.560483	0.000000
LOG(COOPERATIVE)	-0.373600	-12.016525	0.000000
LOG(SCHOOL)	-0.196562	-1.196106	0.233956
LOG(LIFE_EXP)	-1.694958	-6.356338	0.000000
LOG(GINI)	-0.820360	-12.856541	0.000000
R ²			0.972491

Table 9.
Eastern Part Regression Result (Continued)

Regression 5			
	Coefficient	t-statistic	Prob.
C	12.473199	11.309838	0.000000
LOG(CREDIT)	0.005959	0.264290	0.791998
LOG(BANK_OFFICE)	-0.351504	-16.498664	0.000000
LOG(SCHOOL)	-0.202866	-1.233319	0.219808
LOG(LIFE_EXP)	-2.075845	-7.637342	0.000000
LOG(GINI)	-0.705187	-10.637551	0.000000
<i>R</i> ²			0.971711
Regression 6			
	Coefficient	t-statistic	Prob.
C	11.969259	10.861965	0.000000
LOG(CREDIT)	-0.052995	-2.394720	0.018142
LOG(COOPERATIVE)	-0.440941	-14.693165	0.000000
LOG(SCHOOL)	-0.207518	-1.256925	0.211162
LOG(LIFE_EXP)	-1.596321	-5.938434	0.000000
LOG(GINI)	-0.966215	-15.753953	0.000000
<i>R</i> ²			0.967800
Regression 7			
	Coefficient	t-statistic	Prob.
C	12.668484	11.651669	0.000000
LOG(SAVING)	0.186217	9.410186	0.000000
LOG(BANK_OFFICE)	-0.315810	-14.887856	0.000000
LOG(SCHOOL)	-0.200366	-1.227444	0.222000
LOG(LIFE_EXP)	-2.060620	-7.669979	0.000000
LOG(GINI)	-0.551372	-8.078290	0.000000
<i>R</i> ²			0.977856
Regression 8			
	Coefficient	t-statistic	Prob.
C	8.525337	7.628825	0.000000
LOG(CREDIT)	-0.003380	-0.151402	0.879907
LOG(COOPERATIVE)	-0.168596	-4.892621	0.000003
LOG(SCHOOL)	-0.854477	-4.984121	0.000002
LOG(LIFE_EXP)	-0.500304	-1.821707	0.070929
LOG(INCOME)	-0.101829	-21.077047	0.000000
<i>R</i> ²			0.981416

Note : The probability values in italic are significant

4.4. Discussion

The variable log(saving) is consistently positive and statistically significant in the two additional regression tests. This result implies that in regions where the savings rate is high, the poverty rate is also high.

4.5. Cointegration Test

The Pedroni residual cointegration test is performed to check the long-run cointegration between financial depth variables, financial access variables, and poverty¹⁷. Table 10 reports the results.

Table 10.
Pedroni Residual Cointegration Test¹⁸

	Statistic	Prob.
Panel v-Statistic	-3.37025	0.99962
Panel rho-Statistic	4.42100	1.00000
Panel PP-Statistic	-8.29658	0.00000
Panel ADF-Statistic	-5.55226	0.00000
Group rho-Statistic	7.406284	1.00000
Group PP-Statistic	-10.8245	0.00000
Group ADF-Statistic	-5.03787	0.00000

V. CONCLUSION

This research analyzes possible relationship between financial development variables and poverty and examines the contribution of financial development to lowering poverty in Indonesia. The variables of interest are the ratio of savings to gross domestic regional product, ratio of credit to gross domestic regional products, number of banks, number of cooperatives, and poverty headcount ratio as a proxy for poverty. In several regression tests, the presence of banks and cooperatives is proven to have statistically significant and negative association with poverty, confirming the importance of financial institutions and their role in alleviating poverty. In addition, the ratio of credit to gross domestic regional products is also found to have a statistically significant and negative relation to poverty, although this result is not robust because of the inconsistency in different regression tests. However, the ratio of savings to gross domestic regional product is found to have positive and statistically significant association with poverty, and this result is consistent in several regression tests, suggesting that in regions where the savings rate is high, the poverty rate is also high. The possible explanation for this is that consumption of private and household sector (over the period of our

¹⁷ The variables included in the cointegration test are log(saving), log(credit), log(bank_office), log(cooperatives), and log(poverty)

¹⁸ The null hypothesis of Pedroni Residual Cointegration Test is no cointegration. 4 of 7 statistics are significant (probability values under 0.05), so the null hypothesis can be rejected

study) contributes significantly to Indonesia's GDP, while the financial resources obtained from savings is not channeled to pro poor investment. Therefore, the effect of consumption is more effective in reducing poverty than the effect of saving.

REFERENCES

- Ahmed, S.M. and Ansari, M.I. (1998). Financial Sector Development and Economic Growth : The South-Asian Experience. *Journal of Asian Economics*, Vol.9, No.3, pp.503-517
- Arestis, Philip; Demetriades, Panicos O. and Luintel, Kul B. (2001). Financial Development and Economic Growth : The Role of Stock Markets. *Journal of Money, Credit and Banking*, Vol.33, No.1
- Banerjee, Abhijit V. and Duflo, Esther. (2011). *Poor Economics : A Radical Rethinking of The Way To Fight Global Poverty*. Public Affairs New York
- Balisacan, Arsenio M.; Pernia, Ernesto M.; Asra, Abuzar. (2002). Revisiting Growth and Poverty Reduction in Indonesia: What Do Subnational Data Show?, *ERD Working Paper Series*, No. 25. Asian Development Bank
- Cull, R., Ehrbeck, T. and Holle N. (2014). Financial Inclusion and Development : Recent Impact Evidence. Consultative Group to Assist the Poor (CGAP) Focus Note No.92, April 2014
- Demirguc-Kunt, A., Klapper, L., Singer, D. and Van Oudheusden, P. (2015). The Global Findex Database 2014 : Measuring Financial Inclusion Around The World. Policy Research Working Paper 7255. World Bank
- De Gregorio, J. and Guidotti, P.E. (1995). Financial Development and Economic Growth. *World Development*, Vol.23, No.3, pp.433-448
- Global Financial Development Report. (2014). World Bank
- Honohan, P. (2008). Cross-county Variation in Household Access to Financial Services. *Journal of Banking and Finance* 32, pp.2493-2500
- Jalilian, H. and Kirkpatrick, C. (2002). Financial Development and Poverty Reduction in Developing Countries. *International Journal of Finance and Economics* 7, pp.97-108
- Quartey, P. (2005). Financial Sector Development, Savings Mobilization and Poverty Reduction in Ghana. United Nations University World Institute for Development Economic Research, Research Paper No.2005/71
- Strauss, J., Witoelar, F., and Sikoki, B. (2016). The Fifth Wave of The Indonesia Family Life Survey : Overview and Field Report Volume 1. Working Research 1143-1/NIA/NICHD RAND Labor and Population
- Yunus, Muhammad. (2007). *Banker To The Poor : Micro-lending and The Battle Against World Poverty*. Public Affairs New York